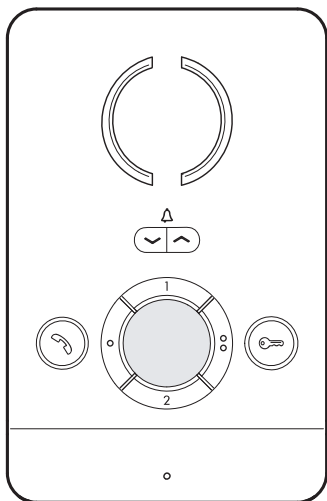




Door Entry System Indoor Receiver

FB00855-EN



PEC USER MANUAL

Function of buttons



Adjustment of ringtone volume (high-medium-Off).

Red LED on = ringtone off.



Activation/Deactivation of communication.

Blue LED on = active communication.



Door lock release (blue LED).

In systems designed to accommodate this signal, during a call from an entry panel, the permanently lit LED indicates that the door is open.

1 Intercom 1 (blue LED)

2 Intercom 2 (blue LED)

Auxiliary 1 (blue LED).

- The function may also be available when there is no active communication, where the system permits it

Auxiliary 2 / Concierge call (blue LED).

- The function may also be available when there is no active communication, where the system permits it.

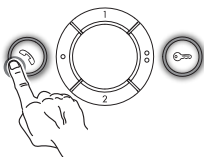
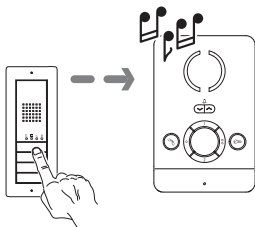
Only use soft, dry or slightly damp cloths to clean the terminal; do not use any chemical products.

This product complies with the relevant directives in force.

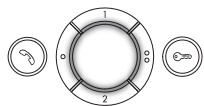
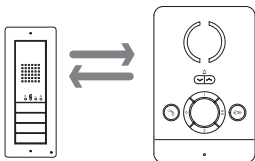
Decommissioning and disposal. Dispose of the packaging and the device at the end of its life cycle responsibly, in compliance with the laws in force in the country where the product is used. The recyclable components are marked with a symbol and the material's ID marker.

THE DATA AND INFORMATION SHOWN IN THIS MANUAL ARE TO BE CONSIDERED AS SUBJECT TO CHANGE AT ANY TIME AND WITHOUT THE NEED FOR ANY ADVANCE WARNING. MEASUREMENTS, UNLESS OTHERWISE INDICATED, ARE IN MILLIMETRES.

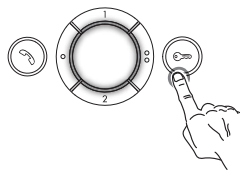
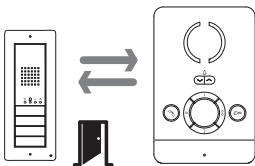
Standard functions



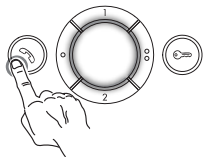
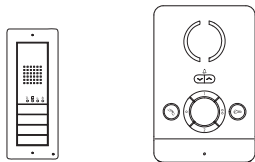
Answering a call.



Active communication.

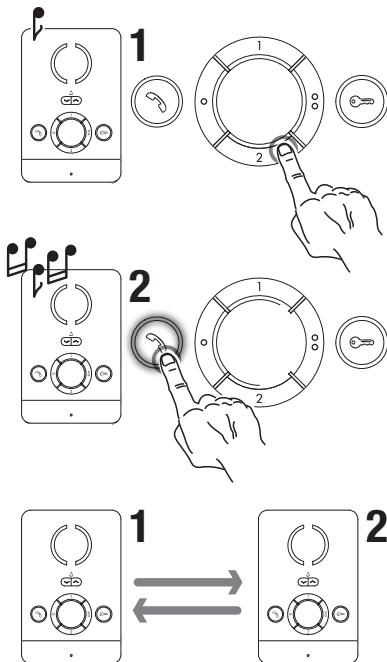


Opening the door of the entry panel that is calling.



Ending the communication


Intercom



Select the extension that you want to call; the line free tone indicates that the call has been forwarded.

3 successive beeps indicate that it is not possible to make calls because the line is busy.

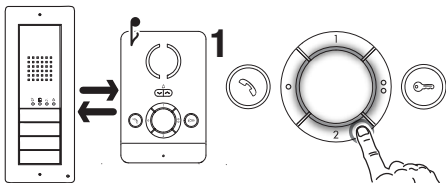
The receiver being called rings.

Press the  key on the receiver that is called to activate the communication.

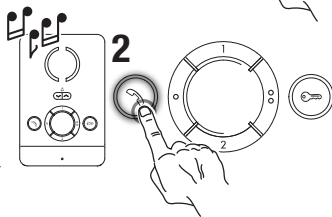
Internal receivers 1 and 2 are in communication.

During a conversation between extensions, a call from an entry panel is signalled to the receivers by a beep that is repeated every 5 seconds.


Call transfer

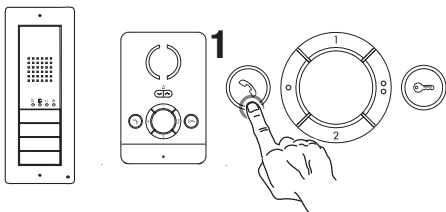



With an active communication, select the extension you wish to transfer the call to; the line free tone indicates that the call has been forwarded.

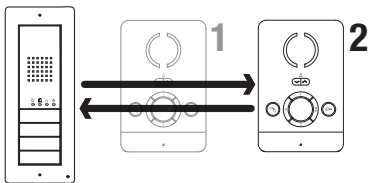


The receiver being called rings.

Press the  key on the receiver that is called to activate the communication. Internal receivers 1 and 2 are in communication, the entry panel is waiting.



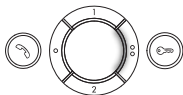
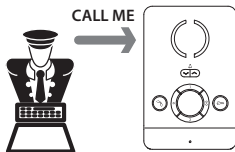
Press the  key on receiver 1 to end the communication with the entry panel and transfer the call to receiver 2.




The receiver that receives the call can also transfer it.

Call from concierge notification

☞ Function available only on systems with concierge's desk.

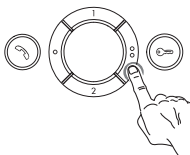
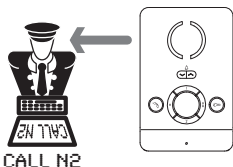



An unanswered call from the concierge's desk is marked by the Aux2 LED  lighting up.

The notification goes out when communication with the concierge begins.

Request for call to concierge

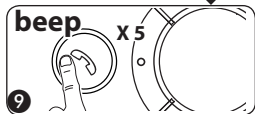
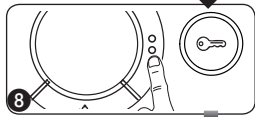
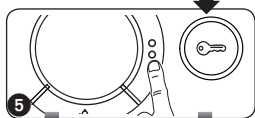
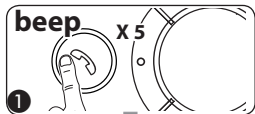
☞ Function available only on systems with concierge's desk.



Pressing the Aux2  button sends a request for call back to the concierge.

Setting melodies

☞ All the programming stages described below must be carried out in sequence:





1- Going into Programming.


Press button  5 times in 5 secs **1**.

A short beep confirms that you have entered programming mode.


2- Programming the melody associated with a call from the entry panel.


To listen to the melodies in sequence, press key  **2**.


To select the melody and exit programming, press key  **3**.

To select the melody and continue with programming, press key  **4**.


3- Programming the melody associated with a call from the front door.

To listen to the melodies in sequence, press key  **5**.

To select the melody and exit programming, press key  **6**.

To select the melody and continue with programming, press key  **7**.

4- Programming the number of rings for the call.

Press key  **8** as many times as you want it to ring (from 1 to 6 rings). Three seconds after the last press of the key the call selected for the chosen number of rings will be played back.

To exit programming, press key  **9**.

☞ See the entry panel documentation for call programming.

CAME 

CAME.COM

CAME S.P.A.

Via Martiri Della Libertà, 15
31030 Dosson di Casier - Treviso - Italy
tel. (+39) 0422 4940 - fax. (+39) 0422 4941