



PLX

**FUNCTIONALITY
HAS A NEW DESIGN.**

CAME 

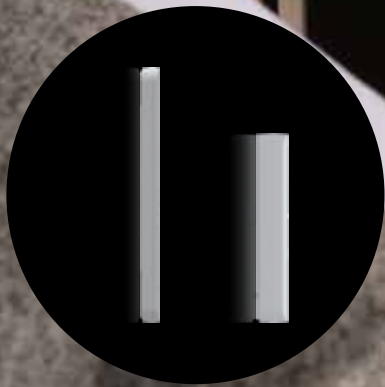
CAME.COM



PLX

The new range of hands-free audio and video entry system is PLX featuring impeccable quality speakers that provide dynamic ringing and perfect audio in conversation.

The video version features a 5-inch color display that provides crystal-clear images, with 480 x 272 pixel resolution and OSD technology for color, contrast and brightness correction.



SLIM AND SLEEK

A stylish receiver that combines minimalism and functionality. Matt white or black finish, slim and sleek shape, with a thickness of only 25 mm for the video version and 21 mm for the audio version.



HANDSFREE

Its advanced technological solutions and the innovative design of the loudspeaker and microphone concealed in the casing ensure crystal-clear audio and high ringer volume.



VOLUME CONTROL

The ringer volume can be easily controlled using the display buttons (volume adjustment or mute mode), while an LED indicator light provides visual indication.

THE ANSWER TO YOUR DESIRE FOR FREEDOM

CAME.COM

VERSION WITH WI-FI CONNECTION

With PLX, users can answer video entry phone calls directly from their smartphones.

It is possible to talk to the person who rang and open the gate or front door even if you are not at home.

Through a common Wi-Fi connection to the Internet, the video entry phone can be answered from any room inside the house, from the garden, or even when you are not at home, from the office, or from your car while trapped in traffic.

PLX WIFI has an integrated Wi-Fi module that connects to any home router to access the Internet. This function can be freely accessed by simply installing CAME's ACCESS App on one or more smartphones,



CAME ACCESS

available on:
App Store and Google Play



ADVANCED FUNCTIONS

CAME.COM



ACTUAL SIZE 5"

OSD function for adjusting brightness, contrast and color.
(only for X1-XIP systems)

AUXILIARY OUTPUTS

Button functions can be configured according to specific needs via dip-switches, to manage auxiliary commands or intercom calls. In addition, PLX is equipped with AUX2, which allows calls to the concierge or reception. (function only available for X1-XIP version)

CONTROL OF AUTOMATIONS

With the "Latch" function, users can check the automation of an automatic gate or door and know if they are open even when they are not immediately visible, via an LED icon. (Function available only for the X1-XIP version).

It also allows the gate or door to be kept open for a period of time for a specific purpose.

AUTOMATIC DOOR OPENING

In cases where there is a high entrance and exit flow, for example, medical offices or public places, the automatic door opener function allows visitors to enter without the need to manually answer the intercom.

This function can be easily turned on and off, using the buttons on the device.



SOFT TOUCH BUTTONS

PLX features perfectly balanced size and shape, as well as stylish color and finish. Special attention was also given in terms of developing technology for the touch buttons.

A white LED indicator below the surface, moreover, makes the buttons easily identifiable even in low-light conditions.



FUNCTIONS FOR THE VISUALLY AND HEARING IMPAIRED

Together with the wide range of standard features, PLX receivers are also available in a version that integrates specific functions so that the system can be used by anyone with hearing impairments.

This is because PLX V BF is equipped with Audio Induction Loop technology, dedicated to hearing aid wearers. The concave design of the soft touch controls also allows the visually impaired to interact with the device smoothly.



PLX VIDEO



PLX V PLX V BK

- 5" display
- OSD for image adjustment
- Soft touch buttons
- Ringtone adjustment
- Latch function
- 5 AUX
- 6 intercoms
- Automatic door opener



PLX V BF

- 5" display
- OSD for image adjustment
- Soft touch buttons
- Ringtone adjustment
- Latch function
- 5 AUX
- 6 intercoms
- Automatic door opener
- Functions for hearing-impaired people



PLX V WIFI

- Integrated Wi-Fi module
- 5" display
- OSD for image adjustment
- Soft touch buttons
- Ringtone adjustment
- Latch function
- 5 AUX
- 6 intercoms
- Automatic door opener



PLX V WIFI BF

- Integrated Wi-Fi module
- 5" display
- OSD for image adjustment
- Soft touch buttons
- Ringtone adjustment
- Latch function
- 5 AUX
- 6 intercoms
- Automatic door opener
- Functions for hearing-impaired people

PLX V IP

- 5" display
- Landing call*
- Soft touch buttons
- Ringtone adjustment
- 5 AUX
- Unlimited intercom calls
- Automatic door opener
- "Open and silence" function



PLX V IP WIFI

- Integrated Wi-Fi module
- Landing call*
- "Open and silence" function
- Soft touch buttons
- Ringtone adjustment
- 5 AUX
- Unlimited intercom calls
- Automatic door opener
- "Open and silence" function



PLX V IP WIFI BF

- Integrated Wi-Fi module
- Landing call*
- "Open and silence" function
- Soft touch buttons
- Ringtone adjustment
- 5 AUX
- Unlimited intercom calls
- Automatic door opener
- Functions for hearing-impaired people
- "Open and silence" function

(* Possible association of an IP camera).

PLX AUDIO



PLX A

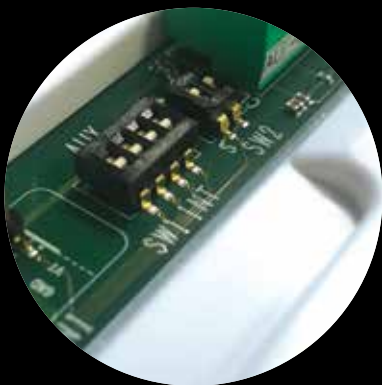
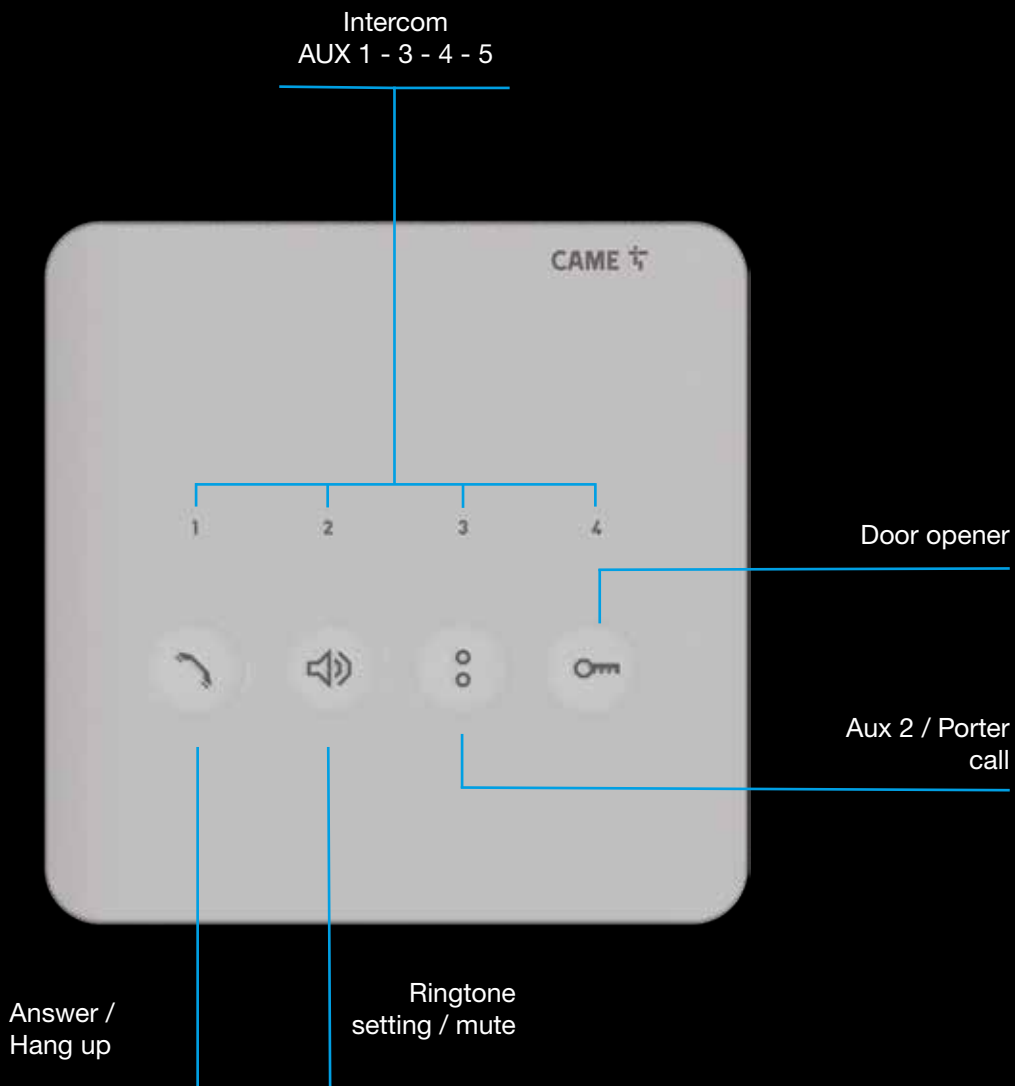
- Door opener
- Soft touch keys
- Ringtone adjustment
- Automatic door opener
- Latch function
- 5 AUX
- 6 intercoms

AGT KT V TABLE STAND

PLX can be supplied with optional table stand.



PLX AUDIO

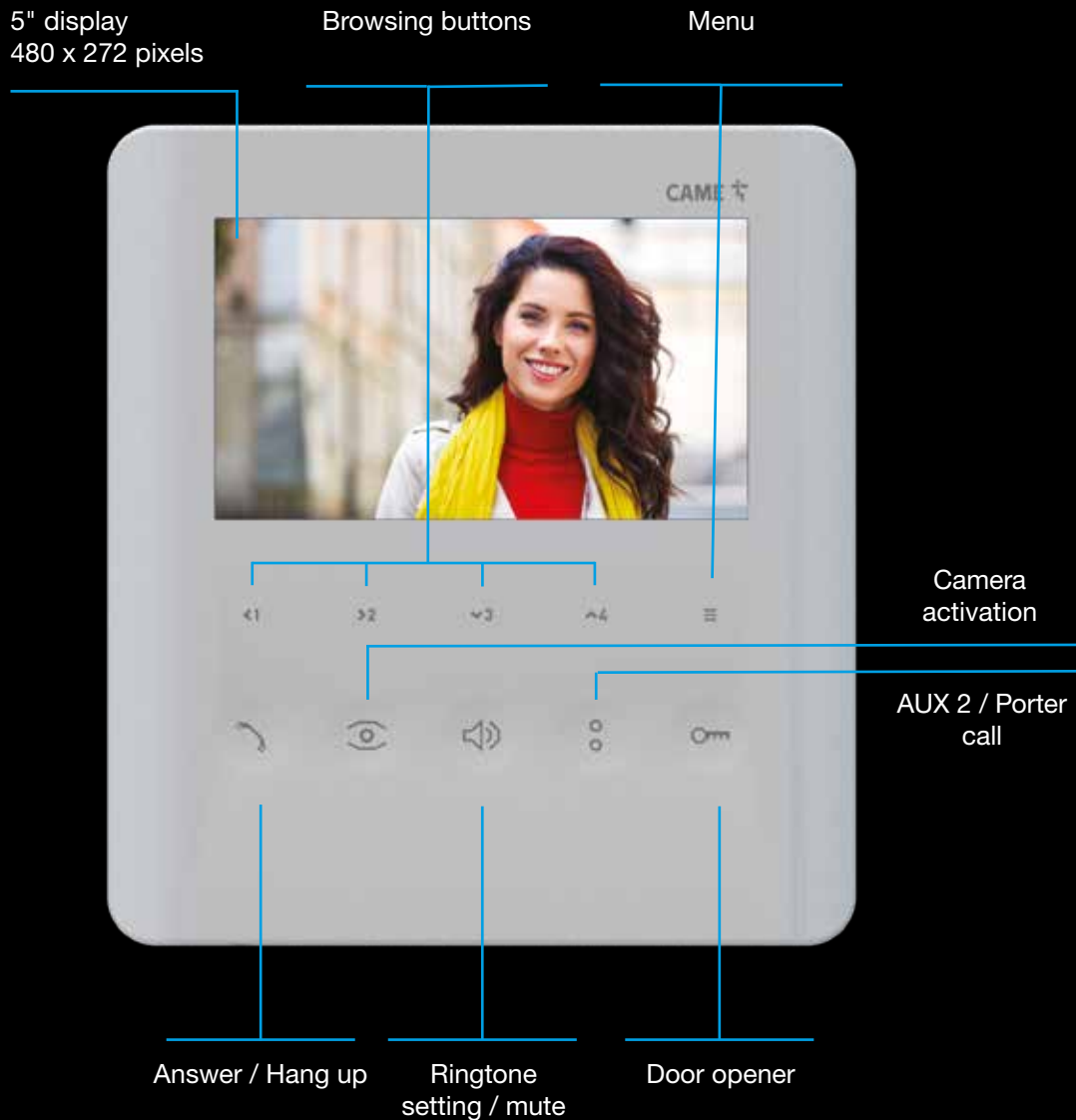


DIP SWITCHES CONFIGURATION

Dip-switch controls on the back of the device allow different PLX button configurations. Buttons with numbers 1 - 2 - 3 - 4 can be set as intercom calls, or as AUX for additional commands.

(Function only available for X1-XIP version).

PLX VIDEO



ETHERNET PORT

The PLX IP range uses Ethernet distribution as its main communication structure and this ensures essentially limitless extension capabilities to the system. The IP360 system overcomes all the limitations of traditional video entry system, making the distance and number of devices that can be connected, the size of the network, and simultaneous audio/video calls unlimited. Thanks to the network connection, the IP360 video entry system is always connected to the Internet. It enables, through CAME's Cloud service, to remotely provide advanced functions for the user and installer to monitor installed systems and intervene when needed quickly and safely.

SIMPLE INSTALLATION

INSTALLING PLX could not be easier: it requires no masonry work prior to fixing. Supplied as standard for wall mounting, it is compatible with 503 boxes and ø60 mm round box in both horizontal and vertical positions.



MOUNTING BRACKET

The wall-mounting frame is also a perfect solution for replacing old models. Once the bracket has been fixed to the wall, the video entry system is simply hooked on through the twist and lock system.

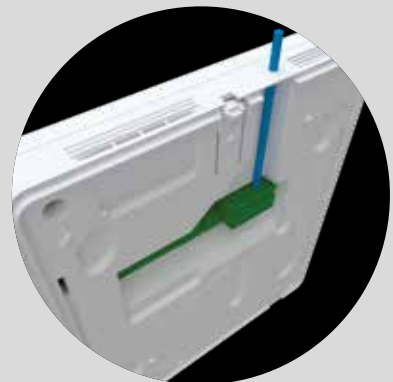
COMPATIBILITY WITH PERLA MODELS

PLX is designed to facilitate the replacement of existing audio and video entry systems, in case of renovations or replacement of obsolete devices.

The footprint of PLX is slightly larger than that of its predecessor PERLA, so any imperfections on the wall will be hidden by the frame of the new entry system.

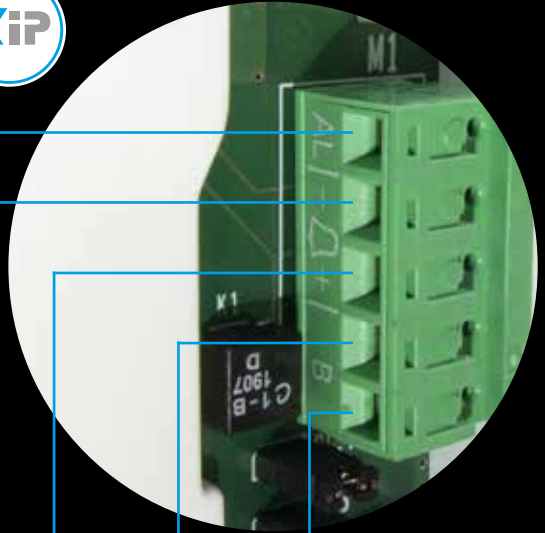
CONNECTIONS

PLX is equipped with a special terminal block that facilitates wiring. Easily removing the terminal block from the receiver body, simply connect the wires and then reinsert the terminal block on the receiver. PLX also has a slot on the back dedicated for installations with wiring outside the wall. PLX V was developed with the same terminal as the PERLA and AGATA series of X1 and XIP versions for easy replacement.

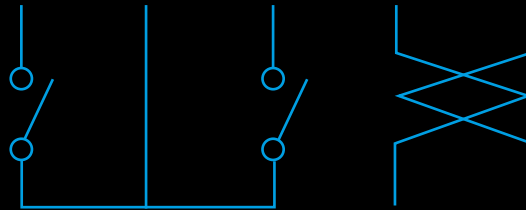


TECHNICAL FEATURES

MODELS	840CC-0030	840CH-0110 840CH-0230	840CH-0120	840CH-0130	840CH-0140	840CH-0170	840CH-0180	840CH-0190
	PLX A	PLX V	PLX V BF	PLX V WIFI	PLX V WIFI BF	PLX V IP WIFI	PLX V IP WIFI BF	PLX V IP
Power supply (V DC)	15 to 20	15 to 20	15 to 20	15 to 20	15 to 20	14 to 18	14 to 18	14 to 18
Current draw (mA)	30	200	200	200	200	220	220	220
Current draw in stand-by mode (mA)	< 1	< 1	< 1	< 1	< 1	110	110	110
Current draw LED (mA)	1	1	1	1	1	X	X	X
Storage temperature (°C)	-25 to +70	-25 to +70	-25 to +70	-25 to +70	-25 to +70	-25 to +70	-25 to +70	-25 to +70
Operating temperature (°C)	+5 to +40	+5 to +40	+5 to +40	+5 to +40	+5 to +40	+5 to +40	+5 to +40	+5 to +40
IP protection rating	IP 30	IP 30	IP 30	IP 30	IP 30	IP 30	IP 30	IP 30
Video standard	-	PAL/NTSC	PAL/NTSC	PAL/NTSC	PAL/NTSC	H.264	H.264	H.264
LCD TFT display (inches)	-	5	5	5	5	5	5	5

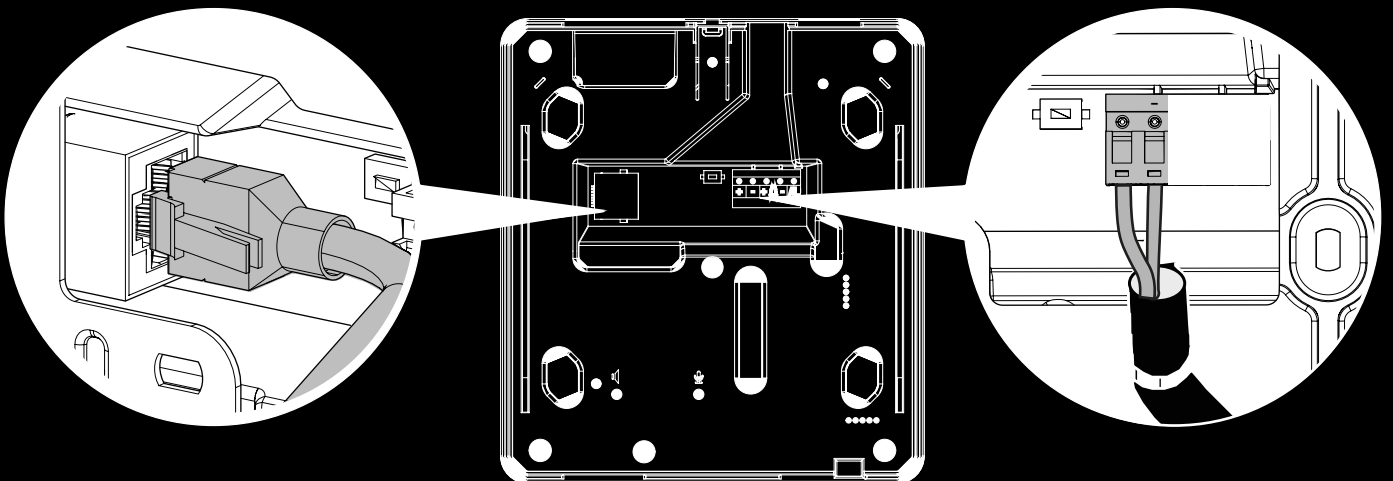


AL - + B B
ALARM INPUT LANDING CALL LANDING CALL BUS LINE INPUT BUS LINE INPUT



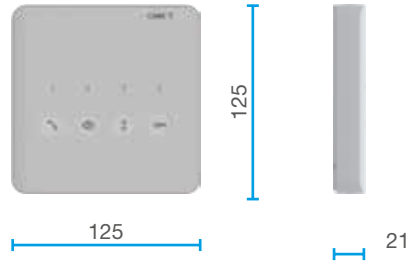
PLX ETHERNET

PLX IP can be powered via PoE or via local power supply.

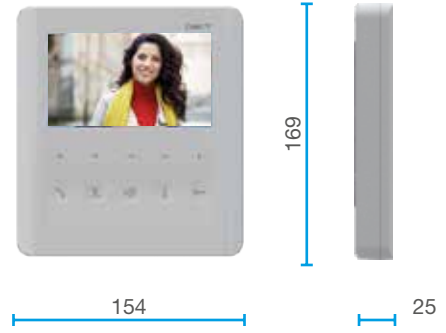


DIMENSIONS

PLX AUDIO



PLX VIDEO



CODES / ITEMS

CODE	ITEM	DESCRIPTION	SYSTEMS COMPATIBILITY
AUDIO ENTRY SYSTEMS for X1 AND XIP SYSTEMS			
840CC-0030	PLX A	Handsfree audio entry system with soft-touch buttons, 4 buttons for intercom calls or auxiliary commands, white. Equipped with button for ringtone adjustment/exclusion.	X1 XIP
VIDEO ENTRY SYSTEMS for X1 AND XIP SYSTEMS			
840CH-0110	PLX V	Handsfree video entry system with soft-touch buttons, 5" LCD display, 4 buttons for intercom calls or auxiliary commands, white. Equipped with button for ringtone adjustment/exclusion.	X1 XIP
840CH-0230	PLX V BK	Handsfree video entry system with soft-touch buttons, 5" LCD display, 4 buttons for intercom calls or auxiliary commands, black. Equipped with button for ringtone adjustment/exclusion.	X1 XIP
840CH-0120	PLX V BF	Handsfree video entry system with soft-touch buttons, 5" LCD display, 4 buttons for intercom calls or auxiliary commands, white. Equipped with button for ringtone adjustment/exclusion. Hearing aid function for hearing aid wearers.	X1 XIP
840CH-0130	PLX V WIFI	Handsfree video entry system with soft-touch buttons, 5" LCD display, 4 buttons for intercom calls or auxiliary commands, white. Equipped with button for ringtone adjustment/exclusion. Provided with Wi-Fi connection.	X1 XIP
840CH-0140	PLX V WIFI BF	Handsfree video entry system with soft-touch buttons, 5" LCD display, 4 buttons for intercom calls or auxiliary commands, white. Equipped with button for ringtone adjustment/exclusion. Hearing aid function for hearing aid wearers. Provided with Wi-Fi connection.	X1 XIP
VIDEO ENTRY SYSTEMS FOR IP360 SYSTEMS			
840CH-0190	PLX V IP	Handsfree video entry receiver with soft-touch buttons for IP360 systems, 5".	IP360
840CH-0170	PLX V IP WIFI	Handsfree video entry receiver with soft-touch buttons for IP360 systems, 5".	IP360
840CH-0180	PLX V IP WIFI BF	Handsfree video entry receiver with soft-touch buttons for IP360 systems, 5".	IP360
ACCESSORIES			
840XC-0150	AGT KT V	Desktop stand for video entry panels of the AGT V, PLX V e PLX A series.	

© CAME SPA - KADENTPE24 - 2024 - EN REV1

Came reserves the right to make any changes to this document at any time. Even partial reproduction is prohibited.

CAME



We are a leading multinational supplier of integrated high-tech solutions for automating residential, public and urban settings which generate intelligent spaces for the wellbeing of people.

- GATE AUTOMATIONS
- VIDEO ENTRY SYSTEMS
- AUTOMATIONS FOR GARAGES AND INDUSTRIAL DOORS
- AUTOMATIC BARRIERS
- PARKING SYSTEMS
- TURNSTILES AND SPEED GATES
- BOLLARDS AND ROAD BLOCKERS
- HEATING CONTROL
- AUTOMATIC DOORS
- SHUTTER AND BLIND SOLUTIONS
- BURGLAR ALARM SYSTEMS
- HOME AUTOMATION

CAME S.P.A.

Via Martiri della Libertà, 15
31030 Dosson di Casier
Treviso - ITALY

CAME.COM

