



**ATI**

**IDEAL SOLUTION  
FOR APPLYING  
TO GATES  
IN SINGLE HOMES  
OR APARTMENT  
BLOCKS.**

Gate leaves  
of up to 5 m

**CAME** 

[CAME.COM](https://www.came.com)





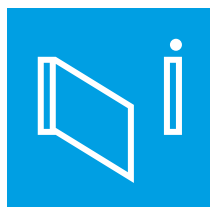
**1**  
LED flashing light  
low consumption

**2**  
Inside photocell

**3**  
C Max. Distance  
between the post's  
inside surface and  
the gate's rotating  
axis

#### IDEAL FOR MEDIUM AND LARGE GATES.

Sturdy, compact, and reliable, it is the operator for medium and large gates of up to 5 m (16 ft) in length, per gate leaf.

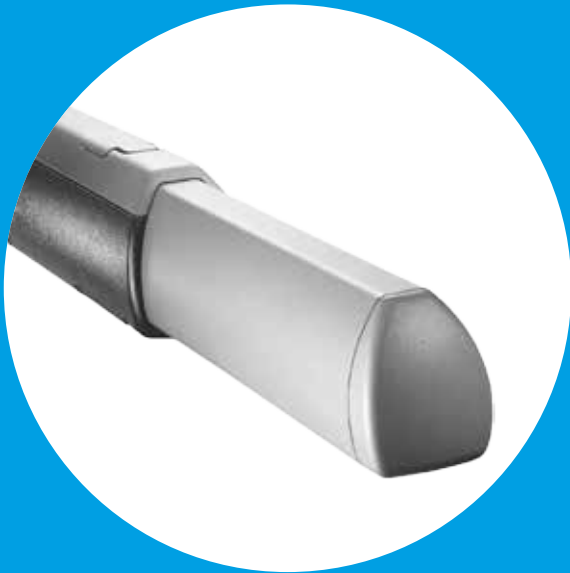


# THE ADVANTAGES OF CAME'S **ATI**

- Available in **reversible and irreversible mode**.
- Can open up to 180° (with the FL-180 accessory).
- Fully covered and protected endless scrow.
- Amperometric obstruction detection.

## 24 VOLT VERSION

- The 24 V versions can work in emergency mode during power outages.
- The 24 V versions feature a simplified connection system with a single three-conductor cable to control the motor and the encoder.



## USER-FRIENDLY AND STURDY

The outer shell is entirely made of aluminium to make it sturdy and resistant to weather conditions. The practical door makes it easy to reach the motor release key for manually opening the gate leaf in case of need.

## TOTAL CONTROL

ATI's 230 V AC electronics, besides the normal control and safety features, provide easy management of the gate's movement, plus features such as partial opening. The control panel runs safety test before each gate opening and closing operation (i.e. self-diagnosis).

## SAFETY UNDER CONTROL

With the 24 V DC versions, when any obstruction prevents the gate's movement, the "amperometric detection device" activates to immediately block or invert the movement.

## ATI TECHNOLOGY



### GUARANTEED 24 VOLTS

The 24 V DC gearmotors are designed for intensive duty and are guaranteed to work even during power outages. This icon also means that a product is powered by low voltage.



### EN TESTED SAFETY

This operator is tested in conformity with European Standards on impact forces.



### 120 V AC

Operator or gearmotor that runs on 120 V AC.

## READ UP AT CAME.COM ABOUT THE FULL RANGE OF CAME OPERATORS AND ACCESSORIES



TRANSMITTERS



PHOTOCELLS



KEY-SWITCH  
SELECTOR



12 KEYPAD  
SELECTOR

CAME is a market leading home, industrial, and special technological projects automation manufacturing company. A full range of household solutions: from operators for gates and garage doors, to shutter and awning winding motors, and even home automation control, to burglar proof and video entry systems. Technology and reliability to serve your business, thanks to solutions designed for powering large industrial doors, automatic doors, street barriers, turnstiles, access control systems and parking facilities.

**CAME.COM**

# CAME AUTOMATED OPERATORS AND ACCESS CONTROL

SLIDING GATE OPERATORS



SWING GATE OPERATORS



AUTOMATED OPERATORS FOR SECTIONAL AND GARAGE DOORS



AUTOMATIC STREET BARRIERS



OPERATORS FOR INDUSTRIAL ENTRANCES



AUTOMATED OPERATORS FOR ROLLER SHUTTERS



AUTOMATIC TURNSTILES AND ACCESS CONTROL



AUTOMATIC PARKING SYSTEMS



ACCESSORIES



COMPLETE SYSTEMS



## CUSTOMIZED ELECTRONICS FOR YOUR NEEDS!

ATI is available with motor at 230 V AC and 24 V DC versions.

The table shows the main characteristics of the control panels, matched to the gearmotors.

120

### CONTROL BOARD / CONTROL PANEL

	ZA3P	ZL180 ZL180110	ZA3P110
<b>SAFETY</b>			
SELF-DIAGNOSING safety devices	■	■	■
PRE-FLASHING when opening and closing	■	■	■
REOPENING during closing	■	■	■
RECLOSING during opening	■		■
Obstruction WAIT			
TOTAL STOP	■	■	■
PARTIAL STOP	■	■	■
OBSTRUCTION DETECTION in front of photocells	■	■	■
ENCODER			
MOVEMENT CONTROLLING and OBSTRUCTION DETECTING device			
AMPEROMETRIC DETECTION		■	
<b>COMMAND</b>			
PEDESTRIAN OPENING 1 leaf		■	
PARTIAL OPENING 1 leaf	■		■
OPEN ONLY from transmitter and/or from button	■	■	■
ONLY OPEN or ONLY CLOSE button connection	■		■
OPEN-STOP-CLOSE-STOP from the transmitter and/or button	■	■	■
OPEN-CLOSE-INVERT from the transmitter and/or button	■	■	■
MAINTAINED ACTION from button	■	■	■
DELAYED OPENING 1st leaf	■	■	■
DELAYED OPENING 2nd leaf	■	■	■
<b>CHARACTERISTICS</b>			
FLASHING LIGHT connection	■	■	■
CYCLE LIGHT connection	■		■
COURTESY LIGHT connection	■		■
Antenna connection	■	■	■
OPEN ALERT LIGHT connection	■	■	■
Contact output for 2nd RADIO CHANNEL	■	■	■
OPERATING TIME adjusting	■		■
SELF-LEARNING of the transmitter's RADIO CODE	■	■	■
Connection for the ELECTRIC LOCK and/or RAMMING	■	■	■
Adjustable AUTOMATIC RECLOSING TIME	■	■	■
OPENING and/or CLOSING slow downs	■	■	■
EMERGENCY BATTERY operation (optional)		■	
TRAVEL and SLOW DOWN SPEEDS adjustable*	■	■	■
DISPLAY			
Self-learning of the opening and closing gate-travel			
CAME Connect			
Designed to fit RIO System 2.0			
CRP control			
ENERGY SAVINGS control (001RGP1)			

NOTES: \* 002ZA3P, 002ZM3E only slow-down speed.

■ 120 - 230 V AC ■ 24 V DC

### ATI TECHNOLOGY

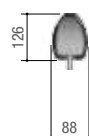
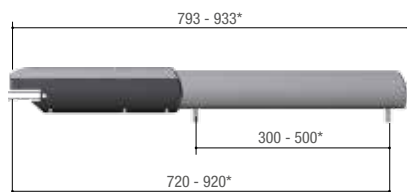
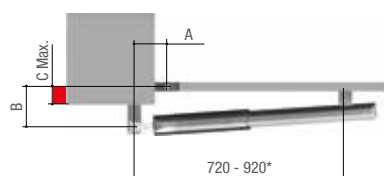
	24	EN TESTED	120
<b>PRODUCT</b>			
ZL180	■	■	
A3024N	■	■	
A5024N	■		
LB180	■		
A3010			■
ZA3P110			■
ZL180110	■		■

The table here above, shows **only** products associated to the mentioned **CAME technologies**. All other range products are listed on the General Catalogue.

**002LB180** - Two 12 V - 1.2 or 7 Ah batteries (not supplied). On the 002ZL180 only with 12 V - 1.2 Ah batteries there is a battery rack inside. On the 002ZL180 with 12 V - 7 Ah batteries, fit a suitable external battery rack.



## DIMENSIONS (MM)



\* 001A5000 - 001A5000A  
001A5100 - 001A5100A  
001A5106 - 001A5006  
**001A5024N**



© KADENALE18 - 2018 - EN

CAME RESERVES THE RIGHT TO MAKE ANY  
CHANGES TO THIS DOCUMENT AT ANY TIME.  
EVEN PARTIAL REPRODUCTION IS PROHIBITED.

## APPLICATION DIMENSION (MM)

MODELS	A3000 - A3000A - A3100 - A3100A - A3106 - A3006 - <b>A3024N</b> - A3010		
LEAF OPENING (°)	A	B	C Max.
90	130	130	60
120	130	110	50
MODELS	A5000 - A5000A - A5100 - A5100A - A5106 - A5006 - <b>A5024N</b>		
LEAF OPENING (°)	A	B	C Max.
90	200	200	120
120	200	140	70

## OPERATING LIMITS

MODELS	A3000 - A3000A - A3100 - A3100A - A3106 - A3006 - <b>A3024N</b> - A3010		
Max. width of leaf (m)	3	2,5	2
Max. width of leaf (m)	400	600	800
MODELS	A5000 - A5000A - A5100 - A5100A - A5106 - A5006 - <b>A5024N</b>		
Max. width of leaf (m)	*5	*4	3
Max. weight of leaf (kg)	400	500	600
			800
			1000

NOTES: \* We suggest fitting an electric lock onto the gate leaf.

## TECHNICAL CHARACTERISTICS

MODELS	A3000	A3000A	A3100	A3100A	A3006	A3106	A5000	A5000A
Protection rating (IP)	44	44	44	44	44	44	44	44
Power supply (V - 50/60 Hz)	230 AC	230 AC	230 AC	230 AC	230 AC	230 AC	230 AC	230 AC
Power supply to motor (V)	230 AC 50/60 Hz	230 AC 50/60 Hz	230 AC 50/60 Hz	230 AC 50/60 Hz	230 AC 50/60 Hz	230 AC 50/60 Hz	230 AC 50/60 Hz	230 AC 50/60 Hz
Absorption (A)	1,2	1,2	1,2	1,2	1,2	1,2	1,2	1,2
Power (W)	150	150	150	150	150	150	150	150
Maneuvering time at 90° (s)	19 ÷ 32	19 ÷ 32	19 ÷ 32	19 ÷ 32	28 ÷ 45	28 ÷ 45	19 ÷ 32	19 ÷ 32
Duty/cycle (%)	50	50	50	50	50	50	50	50
Thrust (N)	400 ÷ 3000	400 ÷ 3000	400 ÷ 3000	400 ÷ 3000	400 ÷ 3000	400 ÷ 3000	400 ÷ 3000	400 ÷ 3000
Operating temperature (°C)	-20 ÷ +55	-20 ÷ +55	-20 ÷ +55	-20 ÷ +55	-20 ÷ +55	-20 ÷ +55	-20 ÷ +55	-20 ÷ +55
Motor's heat protection (°C)	150	150	150	150	150	150	150	150

■ 230 V AC ■ 24 V DC

MODELS	A5100	A5100A	A5006	A5106	<b>A3024N</b>	<b>A5024N</b>	A3010
Protection rating (IP)	44	44	44	44	44	44	44
Power supply (V - 50/60 Hz)	230 AC	230 AC	230 AC	230 AC	-	-	110 AC
Power supply to motor (V)	230 AC 50/60 Hz	230 AC 50/60 Hz	230 AC 50/60 Hz	230 AC 50/60 Hz	24 DC	24 DC	110 AC 50/60 Hz
Absorption (A)	1,2	1,2	1,2	1,2	10 Max.	10 Max.	2,4
Power (W)	150	150	150	150	120	120	150
Maneuvering time at 90° (s)	19 ÷ 32	19 ÷ 32	28 ÷ 45	28 ÷ 45	ADJUSTABLE	ADJUSTABLE	19 ÷ 32
Duty/cycle (%)	50	50	50	50	HEAVY-DUTY	HEAVY-DUTY	50
Thrust (N)	400 ÷ 3000	400 ÷ 3000	400 ÷ 3000	400 ÷ 3000	400 ÷ 3000	400 ÷ 3000	400 ÷ 3000
Operating temperature (°C)	-20 ÷ +55	-20 ÷ +55	-20 ÷ +55	-20 ÷ +55	-20 ÷ +55	-20 ÷ +55	-20 ÷ +55
Motor's heat protection (°C)	150	150	150	150	-	-	150

■ 120 - 230 V AC ■ 24 V DC



**CAME S.p.A.**  
has the following Quality,  
Environmental and Safety certifications:  
**UNI EN ISO 9001**  
**UNI EN ISO 14001**  
**BS OHSAS 18001**

# CAME

**CAME S.p.A.**

Via Martiri della Libertà, 15  
31030 Dosson di Casier  
Treviso - ITALY

**CAME.COM**