



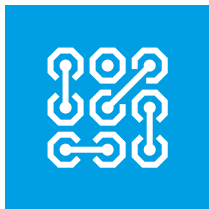
SAFETY ACCESSORIES

SAFETY DEVICES
FOR AUTOMATIC GATES

CAME 

[CAME.COM](https://www.came.com)





SAFETY ACCESSORIES

To complete the automation system, CAME offers a complete range of safety accessories, fully compliant with current safety regulations.

FLASHING LIGHTS, PHOTOCELLS AND SENSITIVE EDGES that can be used in combination with gate or garage door automations, as well as with industrial automations and automatic barriers.

The accessories guarantee that the system is always perfectly certifiable and safe, an essential feature of modern automation.

DLX PHOTOCELLS

Also available for systems
with CXN BUS technology



THE ELEGANT AND COMPACT PHOTOCELL

A built-in LED indicator facilitates alignment and the infrared beam, which is adjustable up to 30 meters, makes it possible to synchronize up to 8 pairs of photocells.

The contact output means that DLX photocells can also be configured as control devices.

The dark gray design of the cover matches the design of the CAME selectors, allowing for an elegant installation with all accessories perfectly coordinated.



DIR PHOTOCELLS



THE SYNCHRONIZED INFRARED PHOTOCELL WITH A RANGE OF 10, 20 OR 30 METERS

With the synchronized infrared beam technology, it is possible to fit multiple pairs of photocells to the same system, even at two different heights or next to each other, without them interfering with each other and without having to invert the transmitters' or receivers' positions.



DXR PHOTOCELLS

Also available for systems
with CXN BUS technology



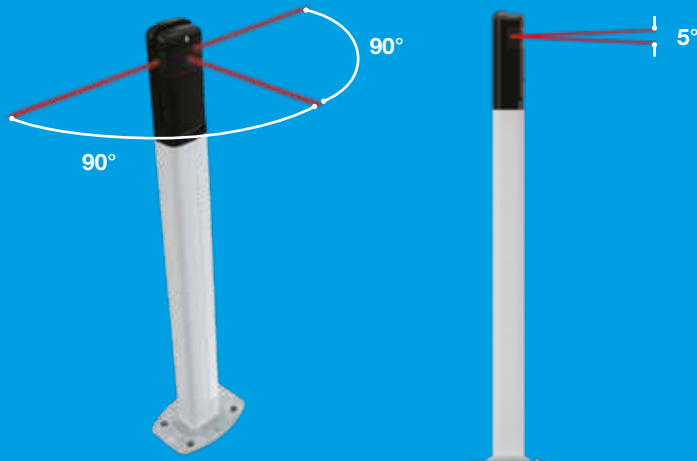
THE PHOTOCELL WITH ADJUSTABLE BEAM

Thanks to its adjustable synchronized infrared beam, it is the ideal solution for applications where the installation space and the system structure prevent the perfect alignment of the standard photocells one in front of the other.

It features a beam with a range of up to 20 meters that can be adjusted and oriented for a 180° range on the horizontal axis and 5° range on the vertical axis.

Through address (DIP) it is possible to synchronize up to 8 pairs of photocells without the need to connect the transmitter to the receiver. DXR photocells are also equipped with the optional aluminum alloy shockproof cover.

Also available in a battery-powered version for quick and easy installation.



ACCESSORIES



DIR SERIES

DIRZ - Special impact-resistant container made of aluminum alloy.



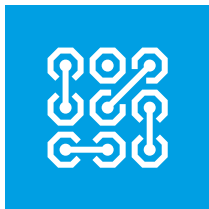
DXR SERIES

806TF-0050 - Special impact-resistant container made of aluminum alloy.



ALL SERIES

Aluminum and PVC columns for installation in double heights, brackets and containers.



FLASHING LIGHTS DURING MOVEMENT

Flashing lights are a very important accessory, especially for installations with sliding or swing gates, as they signal the presence of a moving automation.

CAME flashing lights are made of high quality ABS and polycarbonate for maximum resistance to impact and atmospheric agents with IP54 protection rating, and can be installed on a surface or on a wall, thanks to the dedicated bracket.

LED technology reduces energy consumption by around 80% compared to conventional models, enabling a potentially unlimited product lifetime.

KRX FLASHING LIGHTS

THE MOST ADVANCED LED FLASHING LIGHT AVAILABLE IN 3 DIFFERENT VERSIONS: ORANGE, YELLOW OR WHITE.

The clean lines and integrated antenna provide the new KRX flashing light with a modern design, ideal for any context.

Developed with universal power supply from 24 volts ac-dc to 230 volts ac and integrated dual frequency antenna 433.92 mhz and 868.35 mhz.



KIARO FLASHING LIGHT

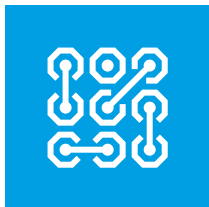
THE IDEAL FLASHING LIGHT FOR ANY RESIDENTIAL OR INDUSTRIAL INSTALLATION.

YELLOW LED flashing light with a simple and streamlined design.

Available in 120 VOLT - 230 VOLT AC
or 24 VOLT AC - DC versions.



+
24
-



SENSITIVE SAFETY EDGES

The sensitive edges are an additional element that ensures high levels of safety for any automation. They can be applied to gates, garage doors or industrial doors, and consist of an outer elastic deformation shell and an internal conductive element.

Any body that obstructs the movement of the automation by exerting pressure on the outer shell sends an alarm signal to the electronic control unit.

EDG SENSITIVE SAFETY-EDGES

RESISTIVE SAFETY EDGES (8K2) ADJUSTABLE IN LENGTH.

Ready-to-use device system available in 4 different lengths and adjustable by simply cutting the support and rubber cover to the desired size.

3 different profiles to choose from to suit different needs, all certified in category 3 and corresponding to performance level e, compliant with EN 13849-1

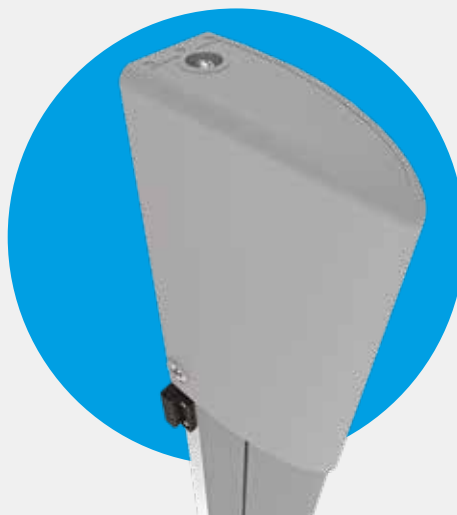


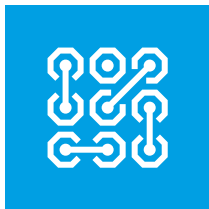
DFWN SENSITIVE SAFETY-EDGES

SAFETY SENSITIVE EDGE MADE OF RUBBER WITH MECHANICAL CONTACT UP TO 6 METERS LONG.

Exclusive CAME patent for protection against any mechanical damage, compliant with EN 13849-1.

It is equipped with mechanical or resistive contacts (8k2w) and is also ideal for use in combination with the RIO wireless system or DXR photocells.





WIRELESS SAFETY SYSTEM

RIO SYSTEM 2.0

RIO System 2.0 is the innovative radio system that does not require any wired connection.

The control module, photocells, safety edge and flashing light represent a complete system based entirely on wireless technology, which drastically reduces installation time.

The control module is connected to the automation control panel and can manage up to 10 radio connected accessories within a radius of 30 meters.

COMPONENTS



806SS-0030

High-visibility wireless flashing light with long operating autonomy.



806SS-0010

Pair of wireless infrared-beam photocells. Infrared range: 10 meters



806SS-0050

Surface mounted radio-control module for managing wireless accessories.



806SS-0040

Plug-in radio control module for managing wireless accessories.

MAIN FEATURES



RIO System 2.0

offers multiple advantages for both the installer and the user:

- Very fast installation times
- No digging or masonry work needed
- No cable routing
- Sleek and elegant design
- Compatible with all CAME control panels
- Total safety according to current regulations
- An immediate solution for bringing systems up to code, even if they are non compliant.
- Low consumption
- Malfunction and battery flat signaling





TRADITIONAL OR CXN BUS CONNECTION

The CAME ZLX24 control board for the management of 24 Volt swing gate automations is equipped with both traditional and CXN BUS inputs for connection of all safety selectors and accessories.

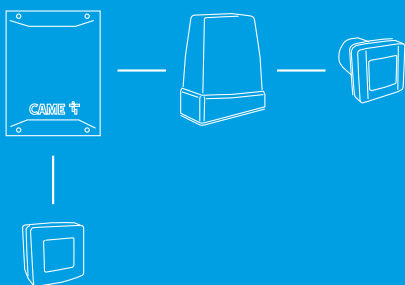
The CAME BUS system makes it possible to complete the installation quickly and easily, with feedback from each accessory thanks to the self-configuration function.

The ZLX24 board allows simultaneous management of:

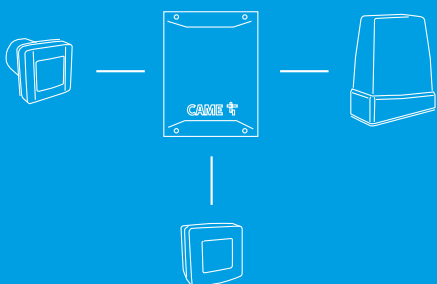
- up to 8 pairs of photocells
- up to 2 flashing lights
- up to 7 selectors (keypads, transponders and key selectors)



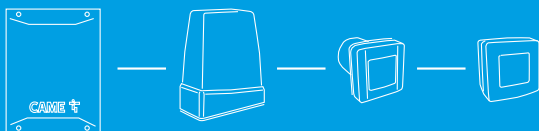
CXN BUS CONNECTION MODE



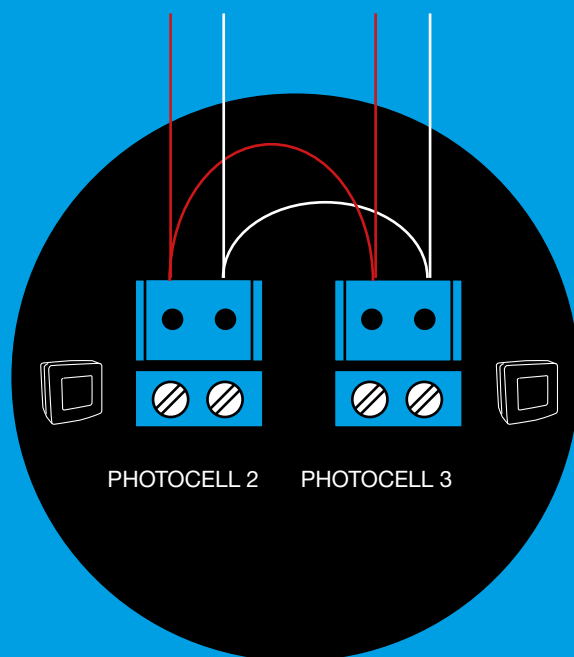
MIXED CONNECTION



STAR CONNECTION



CHAIN CONNECTION



CHAIN CONNECTION

THE COMPLETE RANGE

DIR PHOTOCELL

CODE	DESCRIPTION
Synchronized infrared beam photocells	
001DIR10	Pair of surface-mounted 12 - 24 V AC - DC photocells Range: maximum C-distance of 10 m.
001DIR20	Pair of surface-mounted 12 - 24 V AC - DC photocells Range: maximum C-distance of 20 m.
001DIR30	Pair of surface-mounted 12 - 24 V AC - DC photocells Range: maximum C-distance of 30 m.

DLXPHOTOCELLS

Synchronized infrared beam photocells	
806TF-0070	DLX30CIP - Pair of surface mounted synchronized adjustable infrared-beam photocells rated at 12 - 24 V AC - DC. Range: maximum C-distance of 30 m.
806TF-0080	DLX30CEP - Pair of surface mounted synchronized adjustable infrared-beam photocells rated at 12 - 24 V AC - DC. Range: maximum C-distance of 30 m.
Synchronized infrared-beam BUS CXN photocells	
806TF-0090	DLX30SIP - Pair of built-in synchronized infra-red beam BUS CXN photocells. Range: maximum C-distance of 30 m.
806TF-0100	DLX30SEP - Pair of surface-mounted synchronized infra-red beam BUS CXN photocells. Range: maximum C-distance of 30 m.

DXR PHOTOCELLS

Adjustable synchronized infrared beam photocells	
806TF-0030	DXR20CAP - Pair of surface mounted synchronized, swiveling, infrared-beam photocells rated at 12 - 24 V AC - DC. Range: maximum C-distance of 20 m.
806TF-0040	DXR20CAM - Pair of aluminum, surface mounted, synchronized, swiveling, infrared-beam photocells rated at 12 - 24 V AC - DC. Range: maximum C-distance of 20 m.
806TF-0060	DXR10BAP - Pair of surface mounted synchronized, swiveling, infrared-beam photocells with receiver rated at 12 - 24 V AC - DC and battery transmitter. Range: maximum C-distance of 10 m.
Synchronized, adjustable infrared-beam photocells	
806TF-0110	DXR20SAP - Pair of surface-mounted synchronized adjustable infra-red beam BUS CXN photocells. Range: maximum C-distance of 20 m.

KRX FLASHING LIGHTS

24 V AC - DC to 230 V AC flashing lights	
806LA-0010	KRX1FXSO - LED flashing light with power supply from 24 V AC - DC up to 230 V AC with orange dome.
806LA-0020	KRX1FXSW - LED flashing light with power supply * from 24 V AC - DC up to 230 V AC with white dome.
806LA-0030	KRX1FXSY - LED flashing light with power supply from 24 V AC - DC up to 230 V AC with yellow dome.

KIARO FLASHING LIGHTS

120 - 230 V AC flashing light	
001KLED	LED flashing light.
24 V AC - DC Flashing light	
001KLED24	LED flashing light.

ATTENTION

For safety sensitive edge assembly components and mounting accessories, CONSULT THE GENERAL CATALOG.

© CAME SPA - KADENBQE21 - 2021 - EN

Came reserves the right to make any changes to this document at any time. Even partial reproduction is prohibited.

RIO SYSTEM 2.0 WIRELESS SAFETY SYSTEM

Wireless infrared beam photocells	
806SS-0010	RIOPH8WS - Pair of wireless infrared-beam photocells. Infrared range: maximum C-distance of 10 m.
Wireless modules	
806SS-0020	RIOED8WS - Wireless module for controlling resistive sensitive safety-edges.
Wireless flashing lights	
806SS-0030	RIOLX8WS - Wireless flashing light
Surface-mounted wireless control modules	
806SS-0050	RIOCT8WS - External radio-control module for managing wireless accessories.
Wireless plug-in control modules for operators set up for RIO System 2.0 technology	
806SS-0040	RIOCN8WS - Snap-in, radio-based control module for managing wireless accessories.

DFWN SENSITIVE SAFETY-EDGES

Sensitive safety-edges	
001DFWN1500	Safety sensitive edge made of rubber with mechanical contact. L = 1500 mm.
001DFWN1700	Safety sensitive edge made of rubber with mechanical contact. L = 1700 mm.
001DFWN2000	Safety sensitive edge made of rubber with mechanical contact. L = 2000 mm.
001DFWN2500	Safety sensitive edge made of rubber with mechanical contact. L = 2500 mm.

EDG SENSITIVE SAFETY-EDGE

EDG H - Cuttable resistive safety edges with Click-Fit base - H = 49 mm	
806ED-0130	EDGH15R1 - Sensitive safety-edge made of rubber with profile size 44 mm x 49 mm L = 1500 mm.
806ED-0131	EDGH17R1 - Sensitive safety-edge made of rubber with profile size 44 mm x 49 mm L = 1700 mm.
806ED-0132	EDGH20R1 - Sensitive safety-edge made of rubber with profile size 44 mm x 49 mm L = 2000 mm.
806ED-0133	EDGH25R1 - Sensitive safety-edge made of rubber with profile size 44 mm x 49 mm L = 2500 mm.
EDG I - Cuttable resistive safety edges with Click-Fit base - H = 74 mm	
806ED-0140	EDGI15R1 - Sensitive safety-edge made of rubber with profile size 44 mm x 74 mm L = 1500 mm.
806ED-0141	EDGI17R1 - Sensitive safety-edge made of rubber with profile size 44 mm x 74 mm L = 1700 mm.
806ED-0142	EDGI20R1 - Sensitive safety-edge made of rubber with profile size 44 mm x 74 mm L = 2000 mm.
806ED-0143	EDGI25R1 - Sensitive safety-edge made of rubber with profile size 44 mm x 74 mm L = 2500 mm.
EDG L - Cuttable resistive safety edges with Click-Fit base - H = 99 mm	
806ED-0150	EDGL15R1 - Sensitive safety-edge made of rubber with profile size 44 mm x 99 mm L = 1500 mm.
806ED-0151	EDGL17R1 - Resistive safety edge, rubber with profile dimensions 44 mm x 99 mm. L = 1700 mm.
806ED-0152	EDGL20R1 - Resistive safety edge, rubber with profile dimensions 44 mm x 99 mm. L = 2000 mm.
806ED-0153	EDGL25R1 - Resistive safety edge, rubber with profile dimensions 44 mm x 99 mm. L = 2500 mm.
Cordless control for resistive edges	
806TF-0060	DXR10BAP - Pair of surface mounted synchronized, swiveling, infrared-beam photocells with receiver rated at 12 - 24 V AC - DC and battery transmitter. Range: maximum C-distance of 10 m.

CAME



We are a leading multinational supplier of integrated high-tech solutions for automating residential, public and urban settings, which generate intelligent spaces for the wellbeing of people.

- GATE AUTOMATION
- VIDEO ENTRY SYSTEMS
- AUTOMATIONS FOR GARAGES AND INDUSTRIAL DOORS
- AUTOMATIC BARRIERS
- PARKING SYSTEMS
- TURNSTILES AND SPEED GATES
- BOLLARDS AND ROAD BLOCKERS
- HEATING CONTROL
- AUTOMATIC DOORS
- SHUTTER AND BLIND SOLUTIONS
- BURGLAR ALARM SYSTEMS
- HOME AUTOMATION

CAME S.P.A.

Via Martiri della Libertà, 15
31030 Dosson di Casier
Treviso - ITALY

CAME.COM

